



Shaant Residency

**Divine Dwellings For
Tranquility & Serenity**

10 Luxury Apartments



WELLBUILT.IN

- 1 ● **About Us**
- 2 ● **Our Services**
- 3 ● **Amenities**
- 4 ● **Property Description**
- 5 ● **key Specifications**
- 6 ● **Salient Features**
- 7 ● **Contact Us**

Table of Contents



About Us

Wellbuilt Developers is a growing construction company in South India, led by dynamic entrepreneurs and seasoned professionals. Our goal is to be a top firm known for **luxury affordable** homes for everyone.

- **Expertise and Experience:** Since 1994, skilled professionals with latest techniques, proven track record.
- **Quality and Craftsmanship:** Top-notch materials, attention to detail, appealing, structurally sound projects.
- **Customer Satisfaction:** Commitment, responsive communication, on-time and on-budget delivery.



Services we offer

- **Residential Apartments:** We provide high-quality residential apartments with modern amenities and a focus on comfort and convenience.
- **Interiors:** We specialize in creating beautiful and functional interior spaces, tailored to our clients' preferences and requirements.
- **Plots:** We offer plots of land in strategic locations, perfect for building your dream home or for investment purposes.
- **Commercial:** Our commercial services cater to businesses looking for prime locations and well-designed spaces to set up their operations.



Amenities

- *Elevator for 4 Passengers*
- *Play Area for Kids*
- *Continuous Security Monitoring*
- *Backup Generator*
- *Intercom Facility*
- *CCTV Cameras for Surveillance*
- *Automated Water Pump System*



Property

2 BHK Luxurious

Flats : 5

Size : 1655 Sq.Ft

Description

Indulge in luxury living with our exquisite 2-bedroom apartment properties. These lavish spaces are designed to offer the perfect blend of comfort and style. Enjoy spacious bedrooms, elegant living areas, and modern amenities that cater to your every need.

Property

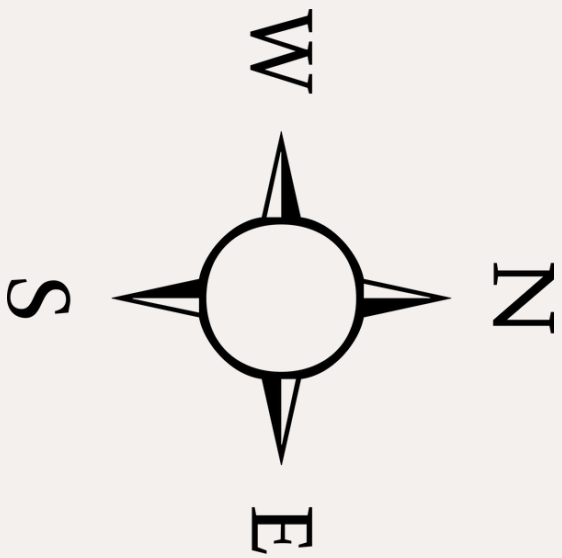
3 BHK

Flats : 5
Size : 1650 Sq.Ft

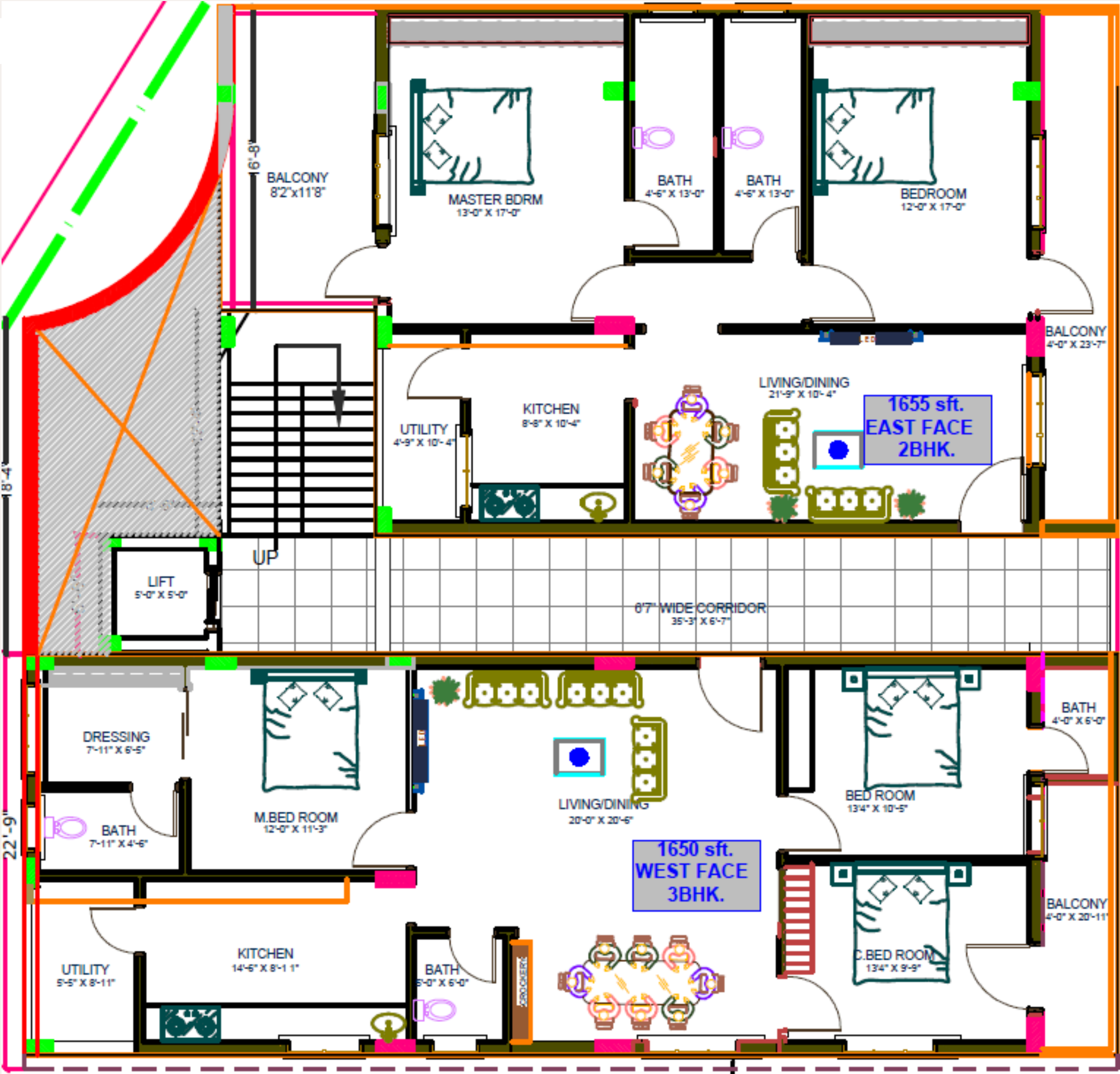
Description

Discover the perfect space for larger families with our spacious and luxurious 3-bedroom apartments. Enjoy premium finishes, modern Amenities and ample room for everyone to relax and unwind. Elevate your living experience with stunning views and upscale facilities designed to cater to the needs of your family.

Space Metrics:
A Guide to Property Dimensions



The information provided in this brochure serves as a conceptual representation of the project and is not a legally binding offer. The developers retain the authority to adjust the design, layout, and features as they see necessary.



Key specifications of the building...

Structure:

- *Seismic resistant, designed for Zone II earthquakes using steel according to National Building Code of India.*
- *R.C.C. Framed Structure*

Doors and Windows:

- *Main Door : Teak wood frame with polished finish and fittings.*
- *Other Doors : SalWood frames with flush doors and powder-coated aluminium fittings. PVC doors for toilets.*
- *Windows : Powder-coated 2-track aluminium frames with sliding glass shutters and M.S. safety grills. 3-track aluminium frames with mosquito nets for bedrooms*

Walls:

- *External Walls : Solid kiln baked bricks.*
- *Internal Walls : Aerecon blocks.*
- *Plastering : Sponge finish for external walls, neeru finish for internal walls.*



key specifications of the building...

Kitchen:

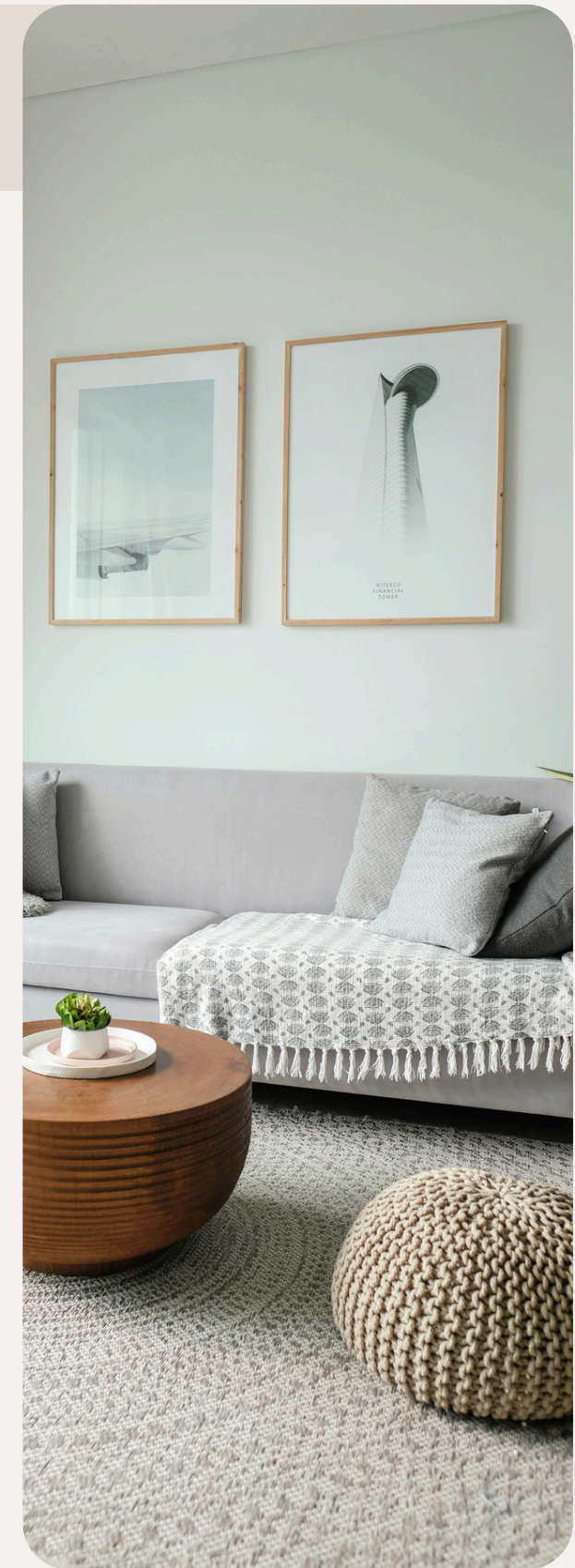
- **Countertop** : Polished granite with stainless steel sink.
- **Tile Backsplash** : Glazed tiles up to 2 feet above the counter.
- **Appliance Provision:** Provision for an Aqua guard, electrical chimney, and microwave oven.

Bathrooms:

- **Flooring** : Vitrified tiles in all bathrooms, anti-skid tiles in toilets and utilities.
- **Walls** : Glazed tiles up to door height.
- **Fixtures** : Hind or Parry ware, CERA or equivalent sanitary accessories and C.P. bathroom fittings.
- **Appliance Provision:** Provision for geysers in all toilets and exhaust fans.

Electrical:

- **Wiring** : Concealed copper wiring with adequate light and fan points in all rooms.
- **TV Point** : TV point in the living room.
- **Switches** : Anchor Roma or equivalent modular switches.
- **Appliance Provision** : Switch and socket for refrigerator, washing machine, and A.C. in the master bedroom.



key specifications of the building...

Other Features:

- **Elevator** : 4-passenger IFT.
- **Painting** : *Asian Plastic Emulsion Paint (PEP) for internal walls and ceilings, Asian Ace for external walls, and Asian enamel paint for all internal doors.*
- **Stairway** : *Granite-cladded steps.*
- **Generator** : *Backup generator for the lift, water pumps, common area lighting, and power backup for each flat during power failure.*
- **Water Supply** : *Panchayath water supply provision and borewell water supply.*
- **Security** : *Two-way intercom facility from the main gate security booth to each flat.*

This newly constructed house is **100% Vastu compliant**, ensuring harmonious and positive energy flow throughout the space.



Salient features of this property

Approved and Regulated: This project is approved by **TUDA**, ensuring legal compliance.

Exclusive and Premium: Only 10 premium apartments are available, offering a sense of exclusivity. These face east and west, which are considered auspicious in Vastu.

Connectivity:

- Chennai-Tirupati-Bangalore 4 Line Express Highway
- Tirupati International Airport (19 km)
- Tirupati Railway Station (3.8 km)
- APSRTC Bus Station (5 km)

Schools

- International Delhi Public School
- Red Cherries School
- Accord School

Restaurants

- Southern Spice Restaurant
- Vivaha Bhojanam
- PS4 Pure Veg Restaurant

Hospitals

- Ankura Hospita
- Apollo Clinic
- Rush Multi Speciality Hospital

Colleges

- Dr R C Reddy Degree College
- Sri Chaitanya Junior College

SuperMarkets

- Reliance Smart Point
- More Super Market

Entertainment

- BNR SV Mall
- CMR Shopping Mall



Contact Information



960-398-9208



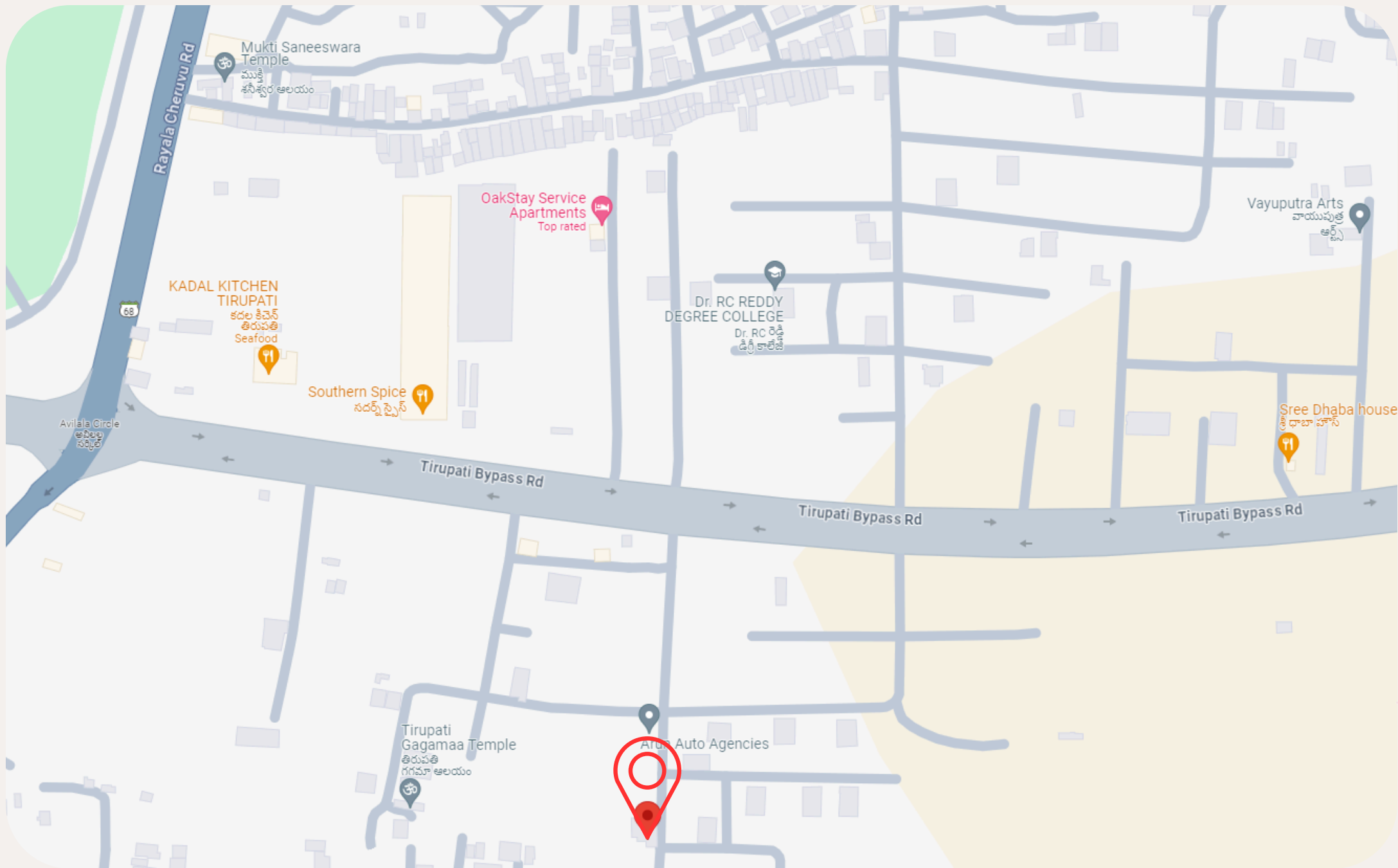
info@wellbuilt.in



www.wellbuilt.in



well_built_developers



Plot no: 41 The Nehru co-operative House Building Society Ltd., Subbaiah colony, Avilala, Tirupati